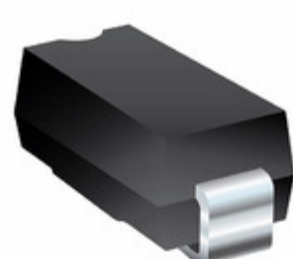


## SMBJ250CA



**BOURNS®**

**Part Number:** [SMBJ250CA](#)

**Manufacturer:** [Bourns, Inc.](#)

**Description:** TVS DIODE 250V 405V SMB

**Data sheet:** [SMBJ Series](#)

**RoHS Status:** Lead free / RoHS Compliant

**Ship From:** Hong Kong

**Shipment Way:** DHL/Fedex/TNT/UPS/EMS

Images are for reference only.  
See Product Specifications for product details.  
Buy SMBJ250CA with confidence from Component-World.HK, 1 Year Warranty

[Request For Quotation](#)

### PRODUCT PARAMETER

<b>Part Number</b>	SMBJ250CA	<b>Manufacturer</b>	<a href="#">Bourns, Inc.</a>
<b>Description</b>	TVS DIODE 250V 405V SMB	<b>Lead Free Status / RoHS Status</b>	Lead free / RoHS Compliant
<b>Quantity Available</b>	300024 pcs	<b>Data sheet</b>	<a href="#">SMBJ Series</a>
<b>Category</b>	<a href="#">Circuit Protection</a>	<b>Voltage - Reverse Standoff (Typ)</b>	250V
<b>Voltage - Clamping (Max) @ Ipp</b>	405V	<b>Voltage - Breakdown (Min)</b>	279V
<b>Type</b>	Zener	<b>Supplier Device Package</b>	SMB (DO-214AA)
<b>Series</b>	SMBJ	<b>Power Line Protection</b>	No
<b>Power - Peak Pulse</b>	600W	<b>Packaging</b>	Tape & Reel (TR)
<b>Package / Case</b>	DO-214AA, SMB	<b>Other Names</b>	SMBJ250CABB SMBJ250CABB-ND SMBJ250CABBTR
<b>Operating Temperature</b>	-55°C ~ 150°C (TJ)	<b>Mounting Type</b>	Surface Mount
<b>Moisture Sensitivity Level (MSL)</b>	1 (Unlimited)	<b>Manufacturer Standard Lead Time</b>	16 Weeks
<b>Lead Free Status / RoHS Status</b>	Lead free / RoHS Compliant	<b>Current - Peak Pulse (10/1000µs)</b>	1.5A
<b>Capacitance @ Frequency</b>	-	<b>Bidirectional Channels</b>	1
<b>Applications</b>	General Purpose		

Component-World.com is a Reliable Stocking Distributor of Electronic Components. We specialize in all Bourns, Inc. series electronic components. We have 300024 pieces of Bourns, Inc. SMBJ250CA in stock available now. Request a quote from electronics components distributor at Component-World.com, our sales team will contact you within 24 hours.

RFQ Email: [info@Components-World.com](mailto:info@Components-World.com)

### RELATED PRODUCTS

	<b>Part#:</b> <a href="#">SMBJ24D-M3/I</a> <b>Description:</b> TVS DIODE 24V 38.4V DO214AA	<b>Manufacturers:</b> <a href="#">Electro-Films (EFI) / Vishay</a>	<a href="#">RFQ</a>
	<b>Part#:</b> <a href="#">SMBJ26A</a> <b>Description:</b> TVS DIODE 26V 42.1V DO214AA	<b>Manufacturers:</b> <a href="#">Hamlin / Littelfuse</a>	<a href="#">RFQ</a>
	<b>Part#:</b> <a href="#">SMBJ250CE3/TR13</a> <b>Description:</b> TVS DIODE 250V DO214AA	<b>Manufacturers:</b> <a href="#">Microsemi</a>	<a href="#">RFQ</a>
	<b>Part#:</b> <a href="#">SMBJ24HE3/52</a> <b>Description:</b> TVS DIODE 24VWM 43VC SMB	<b>Manufacturers:</b> <a href="#">Vishay Semiconductor Diodes Division</a>	<a href="#">RFQ</a>
	<b>Part#:</b> <a href="#">SMBJ250CAE3/TR13</a> <b>Description:</b> TVS DIODE 250V DO214AA	<b>Manufacturers:</b> <a href="#">Microsemi</a>	<a href="#">RFQ</a>
	<b>Part#:</b> <a href="#">SMBJ250E3/TR13</a> <b>Description:</b> TVS DIODE 250V DO214AA	<b>Manufacturers:</b> <a href="#">Microsemi</a>	<a href="#">RFQ</a>
	<b>Part#:</b> <a href="#">SMBJ250CATR</a> <b>Description:</b> TVS DIODE 250V 405V SMB	<b>Manufacturers:</b> <a href="#">Sensitron Semiconductor / SMC Diode Solutions</a>	<a href="#">RFQ</a>
	<b>Part#:</b> <a href="#">SMBJ26</a> <b>Description:</b> TVS DIODE 26V 44.21V DO214AA	<b>Manufacturers:</b> <a href="#">Hamlin / Littelfuse</a>	<a href="#">RFQ</a>
	<b>Part#:</b> <a href="#">SMBJ250A-H</a> <b>Description:</b> TVS DIODE 250V 405V SMB	<b>Manufacturers:</b> <a href="#">Bourns, Inc.</a>	<a href="#">RFQ</a>
	<b>Part#:</b> <a href="#">SMBJ24HE3/5B</a> <b>Description:</b> TVS DIODE 24V 43V DO214AA	<b>Manufacturers:</b> <a href="#">Electro-Films (EFI) / Vishay</a>	<a href="#">RFQ</a>
	<b>Part#:</b> <a href="#">SMBJ26-E3/52</a> <b>Description:</b> TVS DIODE 26V 46.6V DO214AA	<b>Manufacturers:</b> <a href="#">Electro-Films (EFI) / Vishay</a>	<a href="#">RFQ</a>
	<b>Part#:</b> <a href="#">SMBJ250CA-H</a> <b>Description:</b> TVS DIODE 250V 405V SMB	<b>Manufacturers:</b> <a href="#">Bourns, Inc.</a>	<a href="#">RFQ</a>
	<b>Part#:</b> <a href="#">SMBJ24E3/TR13</a> <b>Description:</b> TVS DIODE 24V 43V DO214AA	<b>Manufacturers:</b> <a href="#">Microsemi</a>	<a href="#">RFQ</a>
	<b>Part#:</b> <a href="#">SMBJ250ATR</a> <b>Description:</b> TVS DIODE 250V 405V SMB	<b>Manufacturers:</b> <a href="#">Sensitron Semiconductor / SMC Diode Solutions</a>	<a href="#">RFQ</a>
	<b>Part#:</b> <a href="#">SMBJ26-E3/5B</a> <b>Description:</b> TVS DIODE 26V 46.6V DO214AA	<b>Manufacturers:</b> <a href="#">Electro-Films (EFI) / Vishay</a>	<a href="#">RFQ</a>
	<b>Part#:</b> <a href="#">SMBJ250A</a> <b>Description:</b> TVS DIODE 250V 405V SMB	<b>Manufacturers:</b> <a href="#">Bourns, Inc.</a>	<a href="#">RFQ</a>
	<b>Part#:</b> <a href="#">SMBJ250A</a> <b>Description:</b> TVS DIODE 250V 405V DO214AA	<b>Manufacturers:</b> <a href="#">Hamlin / Littelfuse</a>	<a href="#">RFQ</a>
	<b>Part#:</b> <a href="#">SMBJ250AE3/TR13</a> <b>Description:</b> TVS DIODE 250V DO214AA	<b>Manufacturers:</b> <a href="#">Microsemi</a>	<a href="#">RFQ</a>
	<b>Part#:</b> <a href="#">SMBJ250CA</a> <b>Description:</b> TVS DIODE 250V 405V DO214AA	<b>Manufacturers:</b> <a href="#">Hamlin / Littelfuse</a>	<a href="#">RFQ</a>
	<b>Part#:</b> <a href="#">SMBJ26A</a> <b>Description:</b> TVS DIODE 26V 42.1V SMB	<b>Manufacturers:</b> <a href="#">AVX Corporation</a>	<a href="#">RFQ</a>

### Related keywords for SMBJ250CA

Bourns, Inc. SMBJ250CA	SMBJ250CA distributor	SMBJ250CA supplier	SMBJ250CA price
SMBJ250CA download datasheet	SMBJ250CA datasheet	SMBJ250CA stock	buy SMBJ250CA
Bourns, Inc. SMBJ250CA	Bourns Inc. SMBJ250CA	J.W. Miller / Bourns SMBJ250CA	